

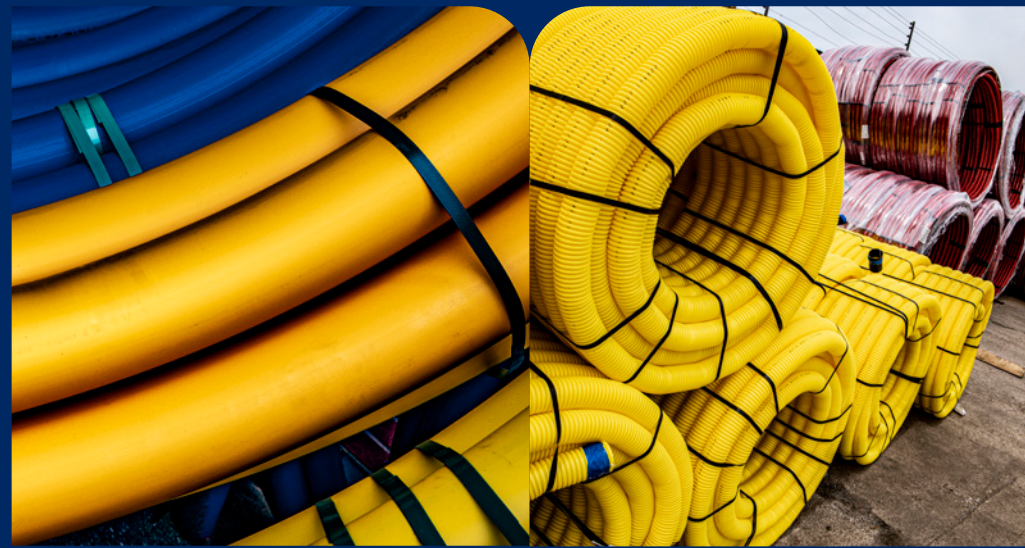


COMPLETE GAS MATERIAL SUPPLIES



PE Pipeline Specialists Ltd

Complete pipeline solutions





Welcome to PE Pipeline Specialists Limited, an independent distributor of pressure pipeline infrastructure materials and solutions to professionals in multi-utility, construction and industry sectors.

Specialising in the supply of gas and water pressure systems we can offer advice and technical knowledge on products, specifications and solutions to customers on installation from mains to meter.

We have over 50 years of experience and knowledge in the utility industry

and was established with a view to provide solution focused materials teamed with quality service in an evolving market.

Strategically located, our regional distribution centre is ideal for motorway networks with the capabilities to deliver a nationwide first class service.

Our effective and dynamic materials management is complimented by our purchasing scale and key supplier partnerships, providing our customer with an extensive range of pressure pipeline materials and a comprehensive range of above and below ground products.



£1 MILLION STOCK



24 HOUR DELIVERY



TECHNICAL KNOWLEDGE



APPROVED PRODUCTS



NO MINIMUM ORDER VALUE

PRODUCT RANGE

"Aptus have worked successfully with PE pipelines for many years. They are a key supplier to our business and work alongside us as partners to ensure our teams and our clients receive the right materials at the right time. The team are friendly, extremely helpful and their approach to customer service means they remain key to our delivery model."

Lisa Kerford

Managing Director, Aptus Utilities



POLYETHYLENE GAS PIPE

4



GAS FITTINGS

7



BUILDING ENTRIES & PECATS

18



VALVES & SECTIONS

21



UNDER PRESSURE TEES

30



GAS METERING

33



TOOLS & ACCESSORIES

39



£1 MILLION STOCK



24 HOUR DELIVERY



TECHNICAL KNOWLEDGE



APPROVED PRODUCTS

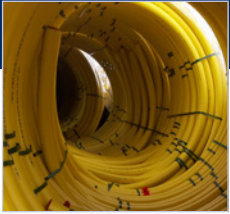


NO MINIMUM
ORDER VALUE

POLYETHYLENE GAS PIPE

PE Pipeline Specialists' product range covers several industries as we provide options for the transportation and distribution of gas, water and wastewater. Supplying products for gas applications, PE Pipeline Specialists can offer technical advice and products to fit your specifications. As well as meters, fittings, UPTs, tools and accessories, we are a leading supplier of pipes from Radius Systems.

POLYETHYLENE GAS PIPE



YELLOW SERVICE PIPE

PE80/SC80

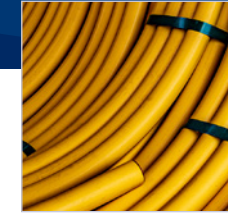
Product Code	Description	UoM
PIPEYEL 2011****M	20MM SDR9 YELLOW PIPE MDPE – Available Coils 50mtr or 100mtr	m
PIPEYEL 2511****M	25MM SDR11 YELLOW PIPE MDPE – Available Coils 50mtr, 100mtr or 150mtr	m
PIPEYEL 3211****M	32MM SDR11 YELLOW PIPE MDPE – Available Coils 50mtr or 100mtr	m
PIPEYEL 6311****M	63MM SDR11 YELLOW PIPE MDPE – Available Coils 50mtr, 100mtr or 150mtr & Sticks 6mtr	m



YELLOW MAINS PIPE

SDR17.6 – PE80/SC80

Product Code	Description	UoM
PIPEYEL 9017****M	90MM YELLOW PIPE SDR17 (3 BAR) – Available Coils 50mtr or 100mtr & Sticks 6mtr or 12mtr	m
PIPEYEL 12517****M	125MM YELLOW PIPE SDR17.6 (3 BAR) – Available Coils 50mtr or 100mtr & Sticks 6mtr or 12mtr	m
PIPEYEL 18017****M	180MM YELLOW PIPE SDR17.6 (3 BAR) – Available Coils 50mtr or 100mtr & Sticks 6mtr or 12mtr	m
PIPEYEL 25017****M	250MM YELLOW PIPE SDR17.6 (3 BAR) – Available Sticks 6mtr or 12mtr	m
PIPEYEL 31517****M	315MM YELLOW PIPE SDR17.6 (3 BAR) – Available Sticks 6mtr or 12mtr	m
PIPEYEL 35517****M	355MM YELLOW PIPE SDR17.6 (3 BAR) – Available Sticks 6mtr or 12mtr	m



YELLOW MAINS PIPE

SDR21 – PE80/SC80

Product Code	Description	UoM
PIPEYEL 25021****M	250MM YELLOW PIPE SDR21 (2.2 BAR) – Available Sticks 6mtr or 12mtr	m
PIPEYEL 31521****M	315MM YELLOW PIPE SDR21 (2.2 BAR) – Available Sticks 6mtr or 12mtr	m
PIPEYEL 35521****M	355MM YELLOW PIPE SDR21 (2.2 BAR) – Available Sticks 6mtr or 12mtr	m

POLYETHYLENE GAS PIPE



YELLOW MAINS PIPE

SDR11 - PE80/SC80

Product Code	Description	UoM
PIPEYEL 9011***M	90MM YELLOW PIPE SDR11 (5.5 BAR) – Available Coils 50mtr or 100mtr & Sticks 6mtr or 12mtr	m
PIPEYEL 12511***M	125MM YELLOW PIPE SDR11 (5.5 BAR) – Available Coils 100mtr & Sticks 6mtr or 12mtr	m
PIPEYEL 18011***M	180MM YELLOW PIPE SDR11 (5.5 BAR) – Available Coils 100mtr & Sticks 6mtr or 12mtr	m



ORANGE MAINS PIPE

SDR11 - PE100/SC100

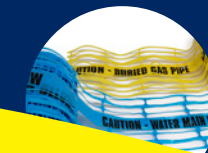
Product Code	Description	UoM
PIPEORA 6311***M	63MM ORANGE PIPE SDR11 (7 BAR) – Available Coils 50mtr or 100mtr & Sticks 6mtr	m
PIPEORA 9011***M	90MM ORANGE PIPE SDR11 (7 BAR) – Available Coils 50mtr or 100mtr & Sticks 6mtr or 12mtr	m
PIPEORA 12511***M	125MM ORANGE PIPE SDR11 (7 BAR) – Available Coils 50mtr or 100mtr & Sticks 6mtr or 12mtr	m
PIPEYEL 18011***M	180MM ORANGE PIPE SDR11 (7 BAR) – Available Coils 50mtr or 100mtr & Sticks 6mtr or 12mtr	m
PIPEORA25011***M	250mm PE100 SDR11 Orange Gas Pipe - Available in 6 & 12mtr Length	m
PIPEORA31511***M	315mm PE100 SDR11 Orange Gas Pipe - Available in 6 & 12mtr Length	m



LOOKING FOR MARKER TAPES?

FULL RANGE SHOWN ON PAGE **40**

Our range of detectable & standard marker tapes are in stock, ready for immediate dispatch!





GAS FITTINGS

PE Pipeline Specialists' product range covers several industries as we provide options for the transportation and distribution of gas, water and wastewater. Supplying products for gas applications, PE Pipeline Specialists can offer technical advice and products to fit your specifications. As well as meters, fittings, UPTs, tools and accessories, we are a leading supplier of pipes from Radius Systems.



£1 MILLION STOCK



24 HOUR DELIVERY



TECHNICAL KNOWLEDGE



APPROVED PRODUCTS



NO MINIMUM
ORDER VALUE

GAS FITTINGS



COUPLERS

Product Code	Description	UoM
20 COUBLK	20MM BLACK EF COUPLER	ea
25 COUBLK	25MM BLACK EF COUPLER	ea
32 COUBLK	32MM BLACK EF COUPLER	ea
63 COUBLK	63MM BLACK EF COUPLER	ea
75 COUBLK	75MM BLACK EF COUPLER	ea
90 COUBLK	90MM BLACK EF COUPLER	ea
125 COUBLK	125MM BLACK EF COUPLER	ea
140 COUBLK	140MM BLACK EF COUPLER	ea
180COUBLK	180MM BLACK EF COUPLER	ea
250 COUBLK	250MM BLACK EF COUPLER	ea
315 COUBLK	315MM BLACK EF COUPLER	ea
355 COUBLK	355MM BLACK EF COUPLER	ea



REDUCING COUPLERS

Product Code	Description	UoM
2520 REDBLK	25MM X 20MM BLACK EF REDUCER	ea
3220 REDBLK	25MM X 20MM BLACK EF REDUCER	ea
3225 REDBLK	32MM X 25MM BLACK EF REDUCER	ea
4032 REDBLK	40MM X 32MM BLACK EF REDUCER	ea
5032 REDBLK	50MM X 32MM BLACK EF REDUCER	ea
6332 REDBLK	63MM X 32MM BLACK EF REDUCER	ea
6340 REDBLK	63MM X 40MM BLACK EF REDUCER	ea
6350 REDBLK	63MM X 50MM BLACK EF REDUCER	ea
7563 REDBLK	75MM X 63MM BLACK EF REDUCER	ea
9063 REDBLK	90MM X 63MM BLACK EF REDUCER	ea
9075 REDBLK	90MM X 75MM BLACK EF REDUCER	ea

12563 REDBLK	125MM X 63MM BLACK EF REDUCER (MANUAL)	ea
12590 REDBLK	125MM X 90MM BLACK EF REDUCER	ea
125110 REDBLK	125MM X 110MM BLACK EF REDUCER	ea
140125 REDBLK	140MM X 125MM BLACK EF REDUCER	ea
180125 REDBLK	180MM X 125MM BLACK EF REDUCER	ea
250180 REDBLK	250MM X 180MM BLACK EF REDUCER (MANUAL)	ea
315250 REDBLK	315MM X 250MM BLACK EF REDUCER (MANUAL)	ea

Larger sizes available – call 01942 727788 to discuss

GAS FITTINGS



SPIGOT REDUCERS

Product Code	Description	UoM
6332 GFSPIGRED	63MM X 32MM SPIGOT REDUCER PE100 SDR11 BLACK	ea
9063 GFSPIGRED	90MM X 63MM SPIGOT REDUCER PE100 SDR11 BLACK	ea
11090 GFSPIGRED	110MM X 90MM SPIGOT REDUCER PE100 SDR11 BLACK	ea
12590 GFSPIGRED17	125MM X 90MM SPIGOT REDUCER PE100 SDR11 BLACK	ea
18090 GFSPIGRED11	180MM X 90MM SPIGOT REDUCER PE100 SDR11 BLACK	ea
180125 GFSPIGRED17	180MM X 125MM SPIGOT REDUCER PE100 SDR11 BLACK	ea
SPRHK 180X160N	180MM X 160MM SPIGOT REDUCER PE100 SDR11 BLACK	ea
25018011 SPIGRED	250MM X 180MM SPIGOT REDUCER PE100 SDR11 BLACK	ea
250200G FSPIGRED	250MM X 200MM SPIGOT REDUCER PE100 SDR11 BLACK	ea
355315 GFSPIGRED	355MM X 315MM SPIGOT REDUCER PE100 SDR11 BLACK	ea



END CAPS

Product Code	Description	UoM
20 ECBLK	20MM BLACK EF END CAPS	ea
25 ECBLK	25MM BLACK EF END CAPS	ea
32 ECBLKT	32MM BLACK EF END CAPS	ea
63 ECBLK	65MM BLACK EF END CAPS	ea
75 ECBLK	75MM BLACK EF END CAPS	ea
90 ECBLK	90MM BLACK EF END CAPS	ea
125 ECBLK	125MM BLACK EF END CAPS	ea
140 ECBLK	140MM BLACK EF END CAPS	ea
180 ECBLK	180MM BLACK EF END CAPS	ea
225 ECBLK	225MM BLACK EF END CAPS	ea
250 ECBLK	250MM BLACK EF END CAPS	ea



90 DEGREE ELBOWS

Product Code	Description	UoM
2090 ELBBLK	20MM BLACK 90° EF ELBOW	ea
2590 ELBBLK	25MM BLACK 90° EF ELBOW	ea
3290 ELBBLK	32MM BLACK 90° EF ELBOW	ea
4090 ELBBLK	40MM BLACK 90° EF ELBOW	ea
5090 ELBBLK	50MM BLACK 90° EF ELBOW	ea
6390 ELBBLK	63MM BLACK 90° EF ELBOW	ea
7590 ELBBLK	75MM BLACK 90° EF ELBOW	ea
9090 ELBBLK	90MM BLACK 90° EF ELBOW	ea
11090 ELBBLK	110MM BLACK 90° EF ELBOW	ea
12590 ELBBLK	236MM BLACK 90° EF ELBOW	ea
16090 ELBBLK	160MM BLACK 90° EF ELBOW	ea
18090 ELBBLK	180MM BLACK 90° EF ELBOW	ea
PL 49050200	200MM BLACK 90° EF ELBOW	ea
PL 4905022590	225MM BLACK 90° EF ELBOW	ea
PL 4905025090	250MM BLACK 90° EF ELBOW	ea

GAS FITTINGS



45 DEGREE ELBOWS

Product Code	Description	UoM
6345 ELBBLK	63MM BLACK 45° EF ELBOW	ea
7045 ELBBLK	75MM BLACK 45° EF ELBOW	ea
9045 ELBBLK	90MM BLACK 45° EF ELBOW	ea
11045 ELBBLK	110MM BLACK 45° EF ELBOW	ea
12545 ELBBLK	125MM BLACK 45° EF ELBOW	ea
16045 ELBBLK	160MM BLACK 45° EF ELBOW	ea
18045 ELBBLK	180MM BLACK 45° EF ELBOW	ea
GF753151821	250MM BLACK 45° EF ELBOW	ea
GF753201821	250MM GF E+ E/F EQUAL TEE PE100 SDR11 PN16 GAS APPROVED	a



22.5 DEGREE ELBOWS

Product Code	Description	UoM
PL 4902090	90MM BLACK 22.5° EF ELBOW (WATER ONLY)	ea
PL 49020110	110MM BLACK 22.5° EF ELBOW (WATER ONLY)	ea
PL 49020125	125MM BLACK 22.5° EF ELBOW (WATER ONLY)	ea
PL 49020160	160MM BLACK 22.5° EF ELBOW (WATER ONLY)	ea
18022 ELBBLK	180MM BLACK 22.5° EF ELBOW	ea



EQUAL TEES

Product Code	Description	UoM
20 ETBLK	20MM BLACK EF TEE	ea
25 ETBLK	25MM BLACK EF TEE	ea
32 ETBLK	32MM BLACK EF TEE	ea
40 ETBLK	40MM BLACK EF TEE	ea
50 ETBLK	50MM BLACK EF TEE	ea
63 ETBLK	63MM BLACK EF TEE	ea
75 ETBLK	75MM BLACK EF TEE	ea
90 ETBLK	90MM BLACK EF TEE	ea
110 ETBLK	110MM BLACK EF TEE	ea
125 ETBLK	125MM BLACK EF TEE	ea
140 ETBLK	140MM BLACK EF TEE	ea
160 ETBLK	160MM BLACK EF TEE	ea
180 ETBLK	180MM BLACK EF TEE	ea

GAS FITTINGS



TAPPING TEES

32MM OUTLET

Product Code	Description	UoM
4032 TTUNI	40MM X 32MM BLACK EF TAPPING TEE	ea
6332 TTUNI	63MM X 32MM BLACK EF TAPPING TEE	ea
7532 TTUNI	75MM X 32MM BLACK EF TAPPING TEE	ea
9032 TTUNI	90MM X 32MM BLACK EF TAPPING TEE	ea
11014032 TTUNI	110 - 140MM X 32MM BLACK EF TAPPING TEE	ea
14018032 TTUNI	140 - 180MM X 32MM BLACK EF TAPPING TEE	ea
20025032 TTUNI	200 - 250MM X 32MM BLACK EF TAPPING TEE	ea
26835532 TTUNI	268 - 355MM X 32MM BLACK EF TAPPING TEE	ea
40056032 TTUNI	400 - 560MM X 32MM BLACK EF TAPPING TEE	ea



TAPPING TEES

63MM OUTLET

Product Code	Description	UoM
6363TTUNI	63MM X 63MM BLACK EF TAPPING TEE	ea
9063TTUNI	90MM X 63MM BLACK EF TAPPING TEE	ea
11012563TTUNI	110 - 125MM X 63MM BLACK EF TAPPING TEE	ea
15518063TTUNI	155 - 180MM X 63MM BLACK EF TAPPING TEE	ea
21328063TTUNI	213 - 280MM X 63MM BLACK EF TAPPING TEE	ea
31535563TTUNI	315 - 355MM X 63MM BLACK EF TAPPING TEE	ea
40046963TTUNI	400 - 469MM X 63MM BLACK EF TAPPING TEE	ea
50056063TTUNI	500 - 560MM X 63MM BLACK EF TAPPING TEE	ea



PURGE TEES

32MM OUTLET

Product Code	Description	UoM
6332 PTYEL	63MM X 32MM BLACK EF PURGE TEE	ea
7532 PTYEL	75MM X 32MM BLACK EF PURGE TEE	ea
9032 PTYEL	90MM X 32MM BLACK EF PURGE TEE	ea
12532 PTYEL	110 - 140MM X 32MM BLACK EF PURGE TEE	ea
18032 PTYEL	140 - 180MM X 32MM BLACK EF PURGE TEE	ea
25032 PTYEL	200 - 250MM X 32MM BLACK EF PURGE TEE	ea
26835532 PTBLK	268 - 355MM X 32MM BLACK EF PURGE TEE	ea
40056032 PTYEL	400 - 560MM X 32MM BLACK EF PURGE TEE	ea
321 PTADAPTOR	32MM X 1" BSPF PURGE TEE ADAPTOR	ea

GAS FITTINGS



PURGE TEES

63MM OUTLET

Product Code	Description	UoM
6363 PTYEL	63MM X 63MM BLACK EF PURGE TEE	ea
9063 PTYEL	90MM X 63MM BLACK EF PURGE TEE	ea
12563 PTYEL	125MM X 63MM BLACK EF PURGE TEE	ea
18063 PTYEL	155 - 180MM X 63MM BLACK EF PURGE TEE	ea
20063 PTYEL	200MM X 63MM BLACK EF PURGE TEE	ea
25063 PTYEL	231 - 280MM X 63MM BLACK EF PURGE TEE	ea
315355 PTBLK	315 - 355MM X 63MM BLACK EF PURGE TEE	ea
400469635 PTBLK	400 - 469MM X 63MM BLACK EF PURGE TEE	ea
632 PTADAPT	63MM X 2" PURGE TEE ADAPTOR	ea



STUB FLANGE KITS

Product Code	Description	UoM
63 SFKYEL	STUB FLANGE KIT 63 X 50MM NP16 PE100 BLACK	ea
90 SFKYEL	STUB FLANGE KIT 90 X 80MM NP16 PE100 BLACK	ea
125 SFKYEL	STUB FLANGE KIT 125 X 100MM NP16 PE100 BLACK	ea
180 SFKYEL	STUB FLANGE KIT 180 X 150MM NP16 PE100 BLACK	ea

STUB FLANGE ASSEMBLIES

Product Code	Description	UoM
63 SFAYEL	63MM X 50NP16 BLACK STUB FLANGE	ea
75 SFAYEL	75MM X 65NP16 BLACK STUB FLANGE	ea
90 SFAYEL	90MM X 80NP16 BLACK STUB FLANGE	ea
125 SFAYEL	125MM X 100NP16 BLACK STUB FLANGE	ea
125 SFAYEL	180MM X 150NP16 BLACK STUB FLANGE	ea

Other sizes available – call 01942 727788 to discuss.



FLANGED BRANCH SADDLES

PE80

Product Code	Description	UoM
12580 FBSBLK	125MM X 80MM NP16 BLACK EF FLANGED BRANCH SADDLE	ea
18080 FBSBLK	180MM X 80MM NP16 BLACK EF FLANGED BRANCH SADDLE	ea
25080 FBSBLK	250MM X 80MM NP16 BLACK EF FLANGED BRANCH SADDLE	ea
180100 FBSYEL	180MM X 100MM NP16 BLACK EF FLANGED BRANCH SADDLE	ea

GAS FITTINGS



BRANCH SADDLES

PE100 - UNDERPART - 90MM OUTLET

Product Code	Description	UoM
9090 BSBLK	90MM X 90MM BLACK EF BRANCH SADDLE	ea
11090 BSBLK	110MM X 90MM BLACK EF BRANCH SADDLE	ea
12590 BSBLK	125MM X 90MM BLACK EF BRANCH SADDLE	ea
16090 BSBLK	160MM X 90MM BLACK EF BRANCH SADDLE	ea
18090 BSBLK	180MM X 90MM BLACK EF BRANCH SADDLE	ea
20090 BSBLK	200MM X 90MM BLACK EF BRANCH SADDLE	ea
22590 BSBLK	225MM X 90MM BLACK EF BRANCH SADDLE	ea
25090 BSBLK	250MM X 90MM BLACK EF BRANCH SADDLE	ea

BRANCH SADDLES

PE100 - UNDERPART - 110MM OUTLET

Product Code	Description	UoM
GF 193135010	110MM X 110MM BLACK EF BRANCH SADDLE	ea
125110 BSBLK	125MM X 110MM BLACK EF BRANCH SADDLE	ea
GF 193135030	125MM X 110MM BLACK EF BRANCH SADDLE	ea
160110 BSBLK	160MM X 110MM BLACK EF BRANCH SADDLE	ea
225110 BSBLK	225MM X 110MM BLACK EF BRANCH SADDLE	ea
250110 BSBLK	250MM X 110MM BLACK EF BRANCH SADDLE	ea

BRANCH SADDLES

PE100 - UNDERPART - 125MM OUTLET

Product Code	Description	UoM
160125 BSBLK	160MM X 125MM BLACK EF BRANCH SADDLE	ea
180125 BSBLK	180MM X 125MM BLACK EF BRANCH SADDLE	ea
200125 BSBLK	200MM X 125MM BLACK EF BRANCH SADDLE	ea
250125 BSBLK	250MM X 125MM BLACK EF BRANCH SADDLE	ea



MULTISEAL BRANCH SADDLES

PE100 - UNDERPART - 63MM OUTLET

Product Code	Description	UoM
6363 BSBLK	63MM X 63MM BLACK EF BRANCH SADDLE - UNDERPART	ea
7563 BSBLK	75MM X 63MM BLACK EF BRANCH SADDLE - UNDERPART	ea
9063 BSBLK	90MM X 63MM BLACK EF BRANCH SADDLE - UNDERPART	ea
11063 BSBLK	110MM X 63MM BLACK EF BRANCH SADDLE - UNDERPART	ea
12563 BSBLK	125MM X 63MM BLACK EF BRANCH SADDLE - UNDERPART	ea
16063 BSBLK	160MM X 63MM BLACK EF BRANCH SADDLE - UNDERPART	ea
18063 BSBLK	180MM X 63MM BLACK EF BRANCH SADDLE - UNDERPART	ea
20063 BSBLK	200MM X 63MM BLACK EF BRANCH SADDLE - UNDERPART	ea
22563 BSBLK	225MM X 63MM BLACK EF BRANCH SADDLE - UNDERPART	ea

GAS FITTINGS



TRANSITION FITTINGS

MALE

Product Code	Description	UoM
253/4 BSPMBLK	25MM PE TO 3/4" BSP MALE COUPLER	ea
321 BSPMBLK	32MM PE TO 1" BSP MALE COUPLER	ea
501.5 BSPMBLK	50MM PE TO 1½" BSP MALE COUPLER	ea
6311/2 BSPMBLK	63MM PE TO 1 1/2" BSP MALE COUPLER	ea
632 BSPMBLK	63MM PE TO 1 1/2" BSP MALE COUPLER	ea

FEMALE

Product Code	Description	UoM
	25MM PE TO 3/4" BSP FEMALE COUPLER	ea
321 BSPFBLK	32MM PE TO 1" BSP FEMALE COUPLER	ea
	50MM PE TO 1½" BSP FEMALE COUPLER	ea
	63MM PE TO 1 1/2" BSP FEMALE COUPLER	ea
632 BSPFBLK	63MM PE TO 2" BSP FEMALE COUPLER	ea

YELLOW PUPPED STUBS

PE80

Product Code	Description	UoM
9017 PUPSFYEL	90MM X 80MM NP16 PUPPED YELLOW STUB FLANGE ASSEMBLY C/W BACKING RING	ea
12517 PUPSFYEL	125MM X 100MM NP16 PUPPED YELLOW STUB FLANGE ASSEMBLY C/W BACKING RING	ea
	180MM X 150MM NP16 PUPPED YELLOW STUB FLANGE ASSEMBLY C/W BACKING RING	ea

Other sizes available – call 01942 727788 to discuss.

YELLOW MITRED / PUPPED ELBOWS

11.25DEG - SDR17.6

Product Code	Description	UoM
25011 MBYEL17	250MM X 11.25 DEG YELLOW SDR17.6 MITRED BEND	ea
31511 MBYEL	315MM X 11.25 DEG YELLOW SDR17.6 MITRED BEND	ea

YELLOW MITRED / PUPPED ELBOWS

22.5DEG - SDR17.6

Product Code	Description	UoM
25022 MBYEL17	250MM X 22.5 DEG YELLOW SDR17.6 MITRED BEND	ea
31517 MBYEL22.5	315MM X 22.5 DEG YELLOW SDR17.6 MITRED BEND	ea

GAS FITTINGS



YELLOW MITRED / PUPPED ELBOWS

45DEG - SDR17.6

Product Code	Description	UoM
25045 MBYEL17	250MM X 45 DEG YELLOW SDR17.6 MITRED BEND	ea
31517 MBYEL45	315MM X 45 DEG YELLOW SDR17.6 MITRED BEND	ea

YELLOW MITRED / PUPPED ELBOWS

90DEG - SDR17.6

Product Code	Description	UoM
25090 MBYEL17	250MM X 90 DEG YELLOW SDR17.6 MITRED BEND	ea
31517 MBYEL90	315MM X 90 DEG YELLOW SDR17.6 MITRED BEND	ea



GALVANISED ELBOWS 90°

Product Code	Description	UoM
MLG 1520.75	3/4" GALV. M/F ELBOW	ea
MLG 1521	1" GALV. M/F ELBOW	ea
MLG 1521.25	1 1/4" GALV. M/F ELBOW	ea
MLG 1521.5	1 1/2" GALV. M/F ELBOW	ea
MLG 1522	2" GALV. M/F ELBOW	ea
MLG 1510.75	3/4" GALV. F/F ELBOW	ea
MLG 1511	1" GALV. F/F ELBOW	ea
MLG 1511.25	1 1/4" GALV. F/F ELBOW	ea
MLG 1511.5	1 1/2" GALV. F/F ELBOW	ea
MLG 1512	2" GALV. F/F ELBOW	ea



BSP SOCKETS

Product Code	Description	UoM
MLG 1760.75	3/4" GALV. SOCKET	ea
MLG 1761	1" GALV. SOCKET	ea
MLG 1761.25	1 1/4" GALV. SOCKET	ea
MLG 1761.5	1 1/2" GALV. SOCKET	ea
MLG 1762	2" GALV. SOCKET	ea

GAS FITTINGS



GALVANISED TUBE

BS1387 SCREWED & SOCKETED

Product Code	Description	UoM
CONP 0.75 GALMED-3.2M	3/4" MEDIUM GRADE GALVANIZED PIPE X 3.2 MTR	ea
CONP 1 GALMED-3.2M	1" MEDIUM GRADE GALVANIZED PIPE X 3.2 MTR	ea
CONP 1.5 GALMED-3M	1 1/2" MEDIUM GRADE GALVANIZED PIPE X 3 MTR	ea
CONP 2 GALMED-3M	2" MEDIUM GRADE GALVANIZED PIPE X 3 MTR	ea



SCREWED CAPS

Product Code	Description	UoM
MLG 1850.75	3/4" GALV. CAP END	ea
MLG 1851	1" GALV. CAP END	ea
MLG 1851.25	1 1/4" GALV. CAP END	ea
MLG 1851.5	1 1/2" GALV. CAP END	ea
MLG 1852	2" GALV. CAP END	ea



BSP PLUGS

Product Code	Description	UoM
MLG 1480.75	3/4" GALV. SOLID PLUG	ea
MLG 1481	1" GALV. SOLID PLUG	ea
MLG 1481.25	1 1/4" GALV. SOLID PLUG	ea
MLG 1481.5	1 1/2" GALV. SOLID PLUG	ea
MLG 1482	2" GALV. SOLID PLUG	ea

BSP UNIONS

Product Code	Description	UoM
MLG 2560.75	3/4" F/F GALV. UNION	ea
MLG 2561	1" F/F GALV. UNION	ea
MLG 2561.25	1 1/4" F/F GALV. UNION	ea
MLG 2561.5	1 1/2" F/F GALV. UNION	ea
MLG 2562	2" F/F GALV. UNION	ea

GAS FITTINGS



NIPPLES: HEXAGON

Product Code	Description	UoM
MLG 1440.75	3/4" GALV. HEXAGON NIPPLE	ea
MLG 1441	1" GALV. HEXAGON NIPPLE	ea
MLG 1441.25	1 1/4" GALV. HEXAGON NIPPLE	ea
MLG 1441.5	1 1/2" GALV. HEXAGON NIPPLE	ea
MLG 1442	2" GALV. HEXAGON NIPPLE	ea
MLG 1452X1	2" X 1" GALV. HEXAGON REDUCING NIPPLE	ea
MLG 1451X1.25	2" X 1 1/4" GALV. HEXAGON REDUCING NIPPLE	ea



NIPPLES: BARREL

Product Code	Description	UoM
BNG 0.75	3/4" GALV. BARREL NIPPLE	ea
BNG 1	1" GALV. BARREL NIPPLE	ea
BNG 1.25	1 1/4" GALV. BARREL NIPPLE	ea
BNG 1.5	1 1/2" GALV. BARREL NIPPLE	ea
BNG 2	2" GALV. BARREL NIPPLE	ea
	3/4" GALV. BARREL NIPPLE - LONG VERSION	ea
	1" GALV. BARREL NIPPLE - LONG VERSION	ea
	1 1/4" GALV. BARREL NIPPLE - LONG VERSION	ea
	1 1/2" GALV. BARREL NIPPLE - LONG VERSION	ea
	2" GALV. BARREL NIPPLE - LONG VERSION	ea



REDUCING BUSHES

Product Code	Description	UoM
MLG 1400.75X0.25	3/4" X 1/4" GALV. REDUCING BUSH	ea
MLG 1400.75X0.5	3/4" X 1/2" GALV. REDUCING BUSH	ea
MLG 1401X0.75	1" X 3/4" GALV. REDUCING BUSH	ea
MLG 1401.5X0.75	1 1/2" X 3/4" GALV. REDUCING BUSH	ea
MLG 1402X0.75	2" X 3/4" GALV. REDUCING BUSH	ea
MLG 1402X1	2" X 1" GALV. REDUCING BUSH	ea
MLG 1402X1.5	2" X 1 1/4" GALV. REDUCING BUSH	ea
MLG 1402X1.5	2" X 1 1/2" GALV. REDUCING BUSH	ea



£1 MILLION STOCK



24 HOUR DELIVERY



TECHNICAL KNOWLEDGE



APPROVED PRODUCTS



NO MINIMUM
ORDER VALUE

BUILDING ENTRIES AND PECATS

PE Pipeline Specialists' product range covers several industries as we provide options for the transportation and distribution of gas, water and wastewater. Supplying products for gas applications, PE Pipeline Specialists can offer technical advice and products to fit your specifications. As well as meters, fittings, UPTs, tools and accessories, we are a leading supplier of pipes from Radius Systems.

BUILDING ENTRIES AND PECATS



ENTRY ELBOW

FACTORY / BUILDING

Product Code	Description	UoM
WASKAG 2093	63MM X 2" X 150MM FACTORY / BUILDING ENTRY ELBOW X 1MTR PE	ea
WASKAG 094	63MM X 2" X 345MM FACTORY / BUILDING ENTRY ELBOW X 1MTR PE	ea
WASKAG 2095	63MM X 2" X 500MM FACTORY / BUILDING ENTRY ELBOW X 1MTR PE	ea
WASKAG 2098	63MM X 2" X 500MM FACTORY / BUILDING ENTRY ELBOW X 2MTR PE	ea
WASKAG 2096	63MM X 2" X 610MM FACTORY / BUILDING ENTRY ELBOW X 1MTR PE	ea
WASKAG 2028	90MM X 3" X 345MM FACTORY / BUILDING ENTRY ELBOW X 1MTR PE	ea
WASKAG 2028SF	90MM X 3" X 345MM FACTORY / BUILDING ENTRY ELBOW X 1MTR PE - SPLIT FLANGE	ea
WASKAG 2061SF	90MM X 3" X 500MM FACTORY / BUILDING ENTRY ELBOW X 1MTR PE - SPLIT FLANGE	ea
WASKAG 2028SF	90MM X 3" X 345MM FACTORY / BUILDING ENTRY ELBOW X 1MTR PE - SPLIT FLANGE	ea



BUILDING ENTRY TEE

Product Code	Description	UoM
WASKAF 0093	25MM SDR11 X 3/4" X 150MM	ea
WASKAF 0094	25MM SDR11 X 3/4" X 345MM	ea
WASKAF 0095	25MM SDR11 X 3/4" X 500MM	ea
WASKAF 0096	32MM SDR11 X 1" X 150MM	ea
WASKAF 0097	32MM SDR11 X 1" X 345MM	ea
WASKAF 0098	32MM SDR11 X 1" X 500MM	ea
WASKAF 0119	32MM SDR11 X 1" X 610MM	ea



UNIVERSAL PUNCH TEE

Product Code	Description	UoM
BH 0017	TEE PUNCH 1" X 32MM	ea
BH 0012	TEE PUNCH 2" X 32MM	ea
BH 0016	PUNCH TEE WRENCH	ea

WASKAG 2061SF	90MM X 3" X 500MM FACTORY / BUILDING ENTRY ELBOW X 1MTR PE - SPLIT FLANGE	ea
WASKAG 2058	90MM X 3" X 610MM FACTORY / BUILDING ENTRY ELBOW X 1MTR PE	ea
WASKAG 2058SF	90MM X 3" X 610MM FACTORY / BUILDING ENTRY ELBOW X 1MTR PE - SPLIT FLANGE	ea
WASKAG 2045	125MM X 4" X 345MM FACTORY / BUILDING ENTRY ELBOW X 1MTR PE	ea
WASKAG 2045SF	125MM X 4" X 345MM FACTORY / BUILDING ENTRY ELBOW X 1MTR PE - SPLIT FLANGE	ea
WASKAG 2034	125MM X 4" X 610MM FACTORY / BUILDING ENTRY ELBOW X 1MTR PE	ea
WASKAG 2034SF	125MM X 4" X 610MM FACTORY / BUILDING ENTRY ELBOW X 1MTR PE - SPLIT FLANGE	ea
WASKAG 2050	180MM X 6" X 345MM FACTORY / BUILDING ENTRY ELBOW X 1MTR PE	ea
WASKAG 2050SF	180MM X 6" X 345MM FACTORY / BUILDING ENTRY ELBOW X 1MTR PE - SPLIT FLANGE	ea
WASKAG 2048	180MM X 6" X 610MM FACTORY / BUILDING ENTRY ELBOW X 1MTR PE	ea
WASKAG 2048SF	180MM X 6" X 610MM FACTORY / BUILDING ENTRY ELBOW X 1MTR PE - SPLIT FLANGE	ea

BUILDING ENTRIES AND PECATS



PECAT GOVERNOR / BELOW GROUND ENTRY FITTING

Product Code	Description	UoM
WASKAD 2022	63MM SDR11 X DN50 PN16 FLANGE - PE 80 YELLOW	ea
WASKAD 2026	90MM SDR11 X DN80 PN16 FLANGE	ea
WASKAD 2029	90MM SDR11 X DN100 PN16 FLANGE - PE 80 YELLOW	ea
WASKAD 2031	125MM SDR11 X DN100 PN16 FLANGE	ea
WASKAD 2043	125MM SDR11 X DN150 PN16 FLANGE	ea
WASKAD 2040	180MM SDR11 X DN150 PN16 FLANGE	ea
WASKAD 20435	250MM SDR17 X DN200 PN16 FLANGE	ea
WASKAD 2044	250MM SDR17 X DN250 PN16 FLANGE	ea



TRANSITION FROG & ADAPTOR (PRESSURE POINT STANDPIPE)

Product Code	Description	UoM
WASKBC 0018	PIPE STD PRESSURE PT 1IN X 32MM WITH FROG	ea
WASKBC 2033	PIPE STD PRESSURE PT 2IN X 63MM WITH FROG	ea



GARAGE ENTRY FITTINGS

Product Code	Description	UoM
WASKBY 2004	GARAGE ENTRY 32/11X1" ML 0.5X0.5X1.25 PE	ea
WASKBY 2014	GARAGE ENTRY 63/11 2" FEM 1.25X1.25X2.3 PE80 YELLOW	ea
WASKBY 2015	GARAGE ENTRY 63/11 2" MALE 0.8x1.25x3.0 PE80 YELLOW	ea



PECAT ADAPTOR

Product Code	Description	UoM
WBR 2103	PECAT MAXI ADAPTOR 315MM X 12" SDR17 0.8 PE80 YW	ea
WBR 2104	PECAT MAXI ADAPTOR 250MM X 10" SDR17 0.5 PE80 YW	ea
WBR 2111	PECAT MAXI ADAPTOR 355MM X 12" SDR17 0.5 PE80 YW	ea
WBR 2149	PECAT MAXI ADAPTOR 90MM X 4" SDR17 0.5 PE80 YW	ea
WBR 2150	PECAT MAXI ADAPTOR 90MM X 3" SDR17 0.5 PE80 YW	ea
WBR 2151	PECAT MAXI ADAPTOR 125MM X 4" SDR17 0.5 PE80 YW	ea
WBR 2152	PECAT MAXI ADAPTOR 125MM X 6" SDR17 0.5 PE80 YW	ea
WBR 2153	PECAT MAXI ADAPTOR 180MM X 6" SDR17 0.5 PE80 YW	ea
WBR 2154	PECAT MAXI ADAPTOR 250MM X 8" SDR17 0.5 PE80 YW	ea



VALVES & SECTIONS

PE Pipeline Specialists' product range covers several industries as we provide options for the transportation and distribution of gas, water and wastewater. Supplying products for gas applications, PE Pipeline Specialists can offer technical advice and products to fit your specifications. As well as meters, fittings, UPTs, tools and accessories, we are a leading supplier of pipes from Radius Systems.



£1 MILLION STOCK



24 HOUR DELIVERY



TECHNICAL KNOWLEDGE



APPROVED PRODUCTS



NO MINIMUM
ORDER VALUE

VALVES & SECTIONS



SERIES 555/401 DONKIN SOFTSEAL GATE VALVE

The Series 555/401 Softseal Valve is a double-faced, resilient seat, internal screw, clear bore wedge gate valve. It is designed primarily for the isolation of natural gas and manufactured gas.

Features

- Full double block and bleed facility with pressure relieving plug
- Soft seal positive shut off, metal to metal secondary seal
- Maintenance-free
- Self-supporting "flange feet" for ease of installation and stockholding
- Fasteners fully encapsulated and sealed with hot melt
- Suitable for under pressure drilling and tapping operations
- Suitable for end-of-line service
- Integral lifting lugs on valves 25kg+
- Stem seal replaceable under pressure
- Profiled 'O' ring body/bonnet joint
- Twin pack black epoxy coating minimum 75 microns
- Embodied carbon data available upon request
- Optional 25mm stem cap, handwheel and position indicator
- Valve installation tracker
- Stainless steel spindle



SERIES 555/401 FIRESAFE SOFTSEAL GATE VALVE

These valves are tested and approved as resistant to high temperatures, and can be installed inside occupied buildings, remaining leak-tight in the event of a fire.

Features

- Full double block and bleed facility with pressure relieving plug
- Optimised design for fire hazard environments
- Soft seal positive shut off, metal to metal secondary seal
- Maintenance-free
- Self-supporting "flange feet" for ease of installation and stockholding
- Fasteners fully encapsulated and sealed with hot melt
- Graphite body/bonnet joint with metal to metal secondary seal
- Suitable for under pressure drilling and tapping operations
- Suitable for end-of-line service
- Integral lifting lugs on valves 20kg+
- Flanged PN16
- Embodied carbon data available upon request
- Stem seal replaceable under pressure
- Optional handwheel, anti-tamper handwheel, and position indicator

Product Code	Description	UoM
555-050-04-011503	50MM SERIES 555/401 DONKIN SOFTSEAL GATE VALVE	ea
555-080-04-011503	80MM SERIES 555/401 DONKIN SOFTSEAL GATE VALVE	ea
555-100-04-011503	100MM SERIES 555/401 DONKIN SOFTSEAL GATE VALVE	ea
555-150-04-011503	150MM SERIES 555/401 DONKIN SOFTSEAL GATE VALVE	ea
555-200-04-011503	200MM SERIES 555/401 DONKIN SOFTSEAL GATE VALVE	ea
555-250-04-011503	250MM SERIES 555/401 DONKIN SOFTSEAL GATE VALVE	ea
555-300-04-011503	300MM SERIES 555/401 DONKIN SOFTSEAL GATE VALVE	ea

VALVES & SECTIONS



SERIES 555/401 PUR COATED SOFTSEAL GATE VALVE

Manufactured with the new Donkin PUR corrosion protection system, enabling burial without need for wrapping of the valve body. To ensure full long term protection, flanges and bolts should be wrapped in line with industry guidelines.

Features

- High integrity coating for buried service with 20 year warranty to EN10290
- Valve installation tracker
- Soft seal, positive shut off, metal to metal 5 secondary sealing
- Full double block and bleed with pressure relieving plug
- Suitable for end-of-line service
- Kitemarked
- Clear bore for under pressure drilling operations
- Fully corrosion resistant construction
- Stainless steel spindle
- Maintenance-free
- "Flange feet" to aid installation and stockholding
- No lubrication required
- Lifting lugs on all sizes
- Embodied carbon content available upon request
- Integral lifting lugs on valves 25kg+

FIRESAFE

Product Code	Description	UoM
555-050-34-011503	50MM SERIES 555/401 FIRESAFE SOFTSEAL GATE VALVE	ea
555-080-34-011503	80MM SERIES 555/401 FIRESAFE SOFTSEAL GATE VALVE	ea
555-100-34-011503	100MM SERIES 555/401 FIRESAFE SOFTSEAL GATE VALVE	ea
555-150-34-011503	150MM SERIES 555/401 FIRESAFE SOFTSEAL GATE VALVE	ea

PUR COATED

Product Code	Description	UoM
555-050-04-01133040	50MM SERIES 555/401 PUR COATED SOFTSEAL GATE VALVE	ea
555-080-04-01133040	80MM SERIES 555/401 PUR COATED SOFTSEAL GATE VALVE	ea
555-100-04-01133040	100MM SERIES 555/401 PUR COATED SOFTSEAL GATE VALVE	ea
555-150-04-01133040	150MM SERIES 555/401 PUR COATED SOFTSEAL GATE VALVE	ea
555-200-04-01133040	200MM SERIES 555/401 PUR COATED SOFTSEAL GATE VALVE	ea
555-250-04-01133040	250MM SERIES 555/401 PUR COATED SOFTSEAL GATE VALVE	ea
555-300-04-01133040	300MM SERIES 555/401 PUR COATED SOFTSEAL GATE VALVE	ea

VALVES & SECTIONS



The Series 158 is a clear bore construction valve for use in making under pressure connections to low, medium and intermediate pressure gas distribution systems. The product is manufactured and approved to specification GIS/V7:Part 1



SERIES 158

PUR COATED

Product Code	Description	UoM
80 SLIDENP16PUR	PUR COATED 80MM SERIES 158 SLIDE / UNDERPRESSURE DRILLING VALVE	ea
100 SLIDENP16PUR	PUR COATED 100MM SERIES 158 SLIDE / UNDERPRESSURE DRILLING VALVE	ea
150 SLIDENP16PUR	PUR COATED 150MM SERIES 158 SLIDE / UNDERPRESSURE DRILLING VALVE	ea
200 SLIDENP16PUR	PUR COATED 200MM SERIES 158 SLIDE / UNDERPRESSURE DRILLING VALVE	ea
250 SLIDENP16PUR	PUR COATED 250MM SERIES 158 SLIDE / UNDERPRESSURE DRILLING VALVE	ea
300 SLIDENP16PUR	PUR COATED 300MM SERIES 158 SLIDE / UNDERPRESSURE DRILLING VALVE	ea

PUR COATED PE TAILED VALVES

Product Code	Description	UoM
90GVGASPUR555	90MM SDR11 555 VALVE PUR COATED PE TAIL	ea
125GVGASPUR555	125MM SDR11 555 VALVE PUR COATED PE TAIL	ea
180GVGASPUR555	180MM SDR11 555 VALVE PUR COATED PE TAIL	ea

AVK SERIES 555

GATE VALVES

Product Code	Description	UoM
50 GVGAS555	50MM FIG 555 CAST IRON GAS VALVE – BARE SPINDLE	ea
80 GVGAS555	80MM FIG 555 CAST IRON GAS VALVE – BARE SPINDLE	ea
100 GVGAS555	100MM FIG 555 CAST IRON GAS VALVE – BARE SPINDLE	ea
150 GVGAS555	150MM FIG 555 CAST IRON GAS VALVE – BARE SPINDLE	ea
200 GVGAS555	200MM FIG 555 CAST IRON GAS VALVE – BARE SPINDLE	ea
250 GVGAS555	250MM FIG 555 CAST IRON GAS VALVE – BARE SPINDLE	ea
300 GVGAS555	300MM FIG 555 CAST IRON GAS VALVE – BARE SPINDLE	ea

Other sizes available – call 01942 727788 to discuss.

VALVES & SECTIONS



AVK SERIES 555

VALVE ACCESSORIES

Product Code	Description	UoM
504/ZK-013	50MM – 200MM FALSE STEM CAP FIG 555 (SUITABLE FOR AVK SERIES 555 GATE VALVES ONLY)	ea
510/ZK-029	250MM – 300MM FALSE STEM CAP FIG 555 (SUITABLE FOR AVK SERIES 555 GATE VALVES ONLY)	ea
508/ZA-015	50MM – 100MM HANDWHEEL FIG 555	ea
512/ZA-055	150MM – 200MM HANDWHEEL FIG 555	ea
514/ZA-002	250MM – 350MM HANDWHEEL FIG 555	ea
500/U-002	50MM – 200MM INDICATOR FIG 555	ea



AEON TYPE 'B'

GATE VALVES

Product Code	Description	UoM
50 GATEGAS	50MM TYPE 'B' CAST IRON GAS VALVE – BARE SPINDLE	ea
80 GATEGAS	80MM TYPE 'B' CAST IRON GAS VALVE – BARE SPINDLE	ea
100 GVGAS	100MM TYPE 'B' CAST IRON GAS VALVE – BARE SPINDLE	ea
BG 1507	150MM TYPE 'B' CAST IRON GAS VALVE – BARE SPINDLE	ea
BG 2007	200MM TYPE 'B' CAST IRON GAS VALVE – BARE SPINDLE	ea
BG 2507	250MM TYPE 'B' CAST IRON GAS VALVE – BARE SPINDLE	ea
BG 3007	300MM TYPE 'B' CAST IRON GAS VALVE – BARE SPINDLE	ea

Other sizes available – call 01942 727788 to discuss.



AEON TYPE 'B'

VALVES ACCESSORIES

Product Code	Description	UoM
BV 0033	50MM – 100MM HANDWHEEL – AEON	ea
BV 0034	150MM HANDWHEEL – AEON	ea
BV 0036	250MM – 300MM HANDWHEEL – AEON	ea
AP 0090	80MM – 100MM INDICATOR – AEON	ea
AP 0091	150MM INDICATOR – AEON	ea

VALVES & SECTIONS



VALVE ACCESSORIES

Product Code	Description	UoM
9X6 EXTSPINDLE	9" X 6" EXTENSION SPINDLE	ea
15X12 EXTSPINDLE	12" x 15" EXTENSION SPINDLE	ea
18X15 EXTSPINDLE	18" X 15" EXTENSION SPINDLE	ea
24X21 EXTSPINDLE	24" X 21" EXTENSION SPINDLE	ea
39X36 EXTSPINDLE	39" X 36" EXTENSION SPINDLE	ea
TKEY 1M	VALVE/HYDRANT T-KEY 1 MTR LONG	ea

Other sizes available – call 01942 727788 to discuss.



CERTUS VALVES

Product Code	Description	UoM
32 PEVAL	32MM PE TAILED GAS VALVE	ea
63 PEVAL	63MM PE TAILED GAS VALVE	ea
90 PEVAL	90MM PE TAILED GAS VALVE	ea
32 PEVALCERT	32MM PE TAILED GAS VALVE – AVK	ea
63 PEVALCERT	63MM PE TAILED GAS VALVE – AVK	ea



AVK DONKIN STEEL BALL VALVE, SERIES 60

Product Code	Description	UoM
20AVK460/02	20MM (3/4") SERIES 60 CARBON STEEL BODY	ea
25AVK460/02	25MM (1") SERIES 60 CARBON STEEL BODY	ea
50AVK460/02	50MM (2") SERIES 60 CARBON STEEL BODY	ea

VALVES & SECTIONS



FIG 55 (455) DONKIN BALL VALVE

Product Code	Description	UoM
FIG 553/4	3/4" FIG 55 GAS BALL VALVE	ea
FIG 551	1" FIG 55 GAS BALL VALVE	ea
FIG 552	2" FIG 55 GAS BALL VALVE	ea
FIG 553/4LD	3/4" FIG 55 GAS BALL VALVE - LIMITED DIMENSION	ea
FIG 551LD	1" FIG 55 GAS BALL VALVE - LIMITED DIMENSION	ea

FIG 60 (460) DONKIN BALL VALVE

Product Code	Description	UoM
	20MM FIG 60 FULL BORE BALL GAS BALL VALVE	ea
FIG 601	25MM FIG 60 FULL BORE BALL GAS BALL VALVE	ea
FIG 602	50MM FIG 60 FULL BORE BALL GAS BALL VALVE	ea



ECV - METER CONTROL VALVE

Product Code	Description	UoM
METCC 221	3/4" BSP X 3/4" BS 746 METER CONTROL VALVE - RED HANDLE	ea
METCC 320	1" BSP X 3/4" BS 746 METER CONTROL VALVE - RED HANDLE	ea
METBW 201	3/4" BS 746 SEALING CAP WASHER	ea
METBS 200	3/4" BS 746 SEALING CAP	ea
METCC 325	1" BSP X 1" BS 746 METER CONTROL VALVE - SILVER HANDLE	ea
METBW 301	1" BS 746 SEALING CAP WASHER	ea
METBS 300	1" BS 746 SEALING CAP	ea
METCC 650	2" BSP X 2" BS 746 METER CONTROL VALVE - RED HANDLE	ea
METBW 601	2" BS 746 SEALING CAP WASHER	ea
METBS 600	2" BS 746 SEALING CAP	ea
METCF 925	3/4" METER CONTROL VALVE ANGLED CONE MP - ORANGE HANDLE	ea

METCF930	3/4" METER CONTROL VALVE INVERTED CONE MP - ORANGE HANDLE	ea
METBS 250	3/4" SEALING CAP FOR MP VALVES C/W WASHER	ea
METCS 050	2" BSP SECURITY EMERGENCY CONTROL VALVE - SILVER HANDLE	ea



LEVER BALL VALVE 1/4 TURN

Product Code	Description	UoM
METCF 020	3/4" LEVER BALL VALVE GAS 1/4 TURN - YELLOW HANDLE	ea
METCF 025	1" LEVER BALL VALVE GAS 1/4 TURN - YELLOW HANDLE	ea
METCF 040	1 1/2" LEVER BALL VALVE GAS 1/4 TURN - YELLOW HANDLE	ea
METCF 050	2" LEVER BALL VALVE GAS 1/4 TURN - YELLOW HANDLE	ea

VALVES & SECTIONS



BLANK FLANGES

Product Code	Description	UoM
BF 50GAS	BLANK FLANGE 2"/50MM NP16 - GAS	ea
BF 65GAS	BLANK FLANGE 2 1/2"/65MM NP16 - GAS	ea
BF 80GAS	BLANK FLANGE 3"/80MM NP16 - GAS	ea
BF 100GAS	BLANK FLANGE 4"/100MM NP16 - GAS	ea
BF 150GAS	BLANK FLANGE 6"/150MM NP16 - GAS	ea
BF 200GAS	BLANK FLANGE 8"/200MM NP16 - GAS	ea
BF 250GAS	BLANK FLANGE 10"/250MM NP16 - GAS	ea
BF 300GAS	BLANK FLANGE 12"/300MM NP16 - GAS	ea



BLANK FLANGES C/W 1" BSP DRILLED HOLE

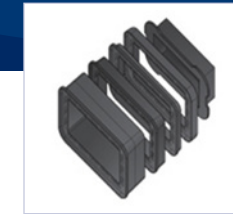
Product Code	Description	UoM
BF 50TAP1	BLANK FLANGE 2"/50MM NP16 C/W 1" BSP TAPPED HOLE - GAS	ea
BF 80TAP1	BLANK FLANGE 3"/80MM NP16 C/W 1" BSP TAPPED HOLE - GAS	ea
BF 100TAP1	BLANK FLANGE 4"/100MM NP16 C/W 1" BSP TAPPED HOLE - GAS	ea
BF 150TAP1	BLANK FLANGE 6"/150MM NP16 C/W 1" BSP TAPPED HOLE - GAS	ea
BF 200TAP1	BLANK FLANGE 8"/200MM NP16 C/W 1" BSP TAPPED HOLE - GAS	ea
BF 250TAP1	BLANK FLANGE 10"/250MM NP16 C/W 1" BSP TAPPED HOLE - GAS	ea
BF 300TAP1	BLANK FLANGE 12"/300MM NP16 C/W 1" BSP TAPPED HOLE - GAS	ea



BLANK FLANGES C/W 2" BSP DRILLED HOLE

Product Code	Description	UoM
BF 50TAP2	BLANK FLANGE 2"/50MM NP16 C/W 2" BSP TAPPED HOLE - GAS	ea
BF 80TAP2	BLANK FLANGE 3"/80MM NP16 C/W 2" BSP TAPPED HOLE - GAS	ea
BF 100TAP2	BLANK FLANGE 4"/100MM NP16 C/W 2" BSP TAPPED HOLE - GAS	ea
BF 150TAP2	BLANK FLANGE 6"/150MM NP16 C/W 2" BSP TAPPED HOLE - GAS	ea
BF 200TAP2	BLANK FLANGE 8"/200MM NP16 C/W 2" BSP TAPPED HOLE - GAS	ea
BF 250TAP2	BLANK FLANGE 10"/250MM NP16 C/W 2" BSP TAPPED HOLE - GAS	ea
BF 300TAP2	BLANK FLANGE 12"/300MM NP16 C/W 2" BSP TAPPED HOLE - GAS	ea

VALVES & SECTIONS



FASTENER SETS

Product Code	Description	UoM
50 BSGAS	50MM NP16 FLANGE SET M16 X 65MM – NITRILE GASKET – GAS	ea
80 BSGASM16X75	80MM NP16 FLANGE SET M16 X 75MM – NITRILE GASKET – GAS	ea
80 BSGAS	80MM NP16 FLANGE SET M16 X 90MM – NITRILE GASKET – GAS	ea
80 BSGASM16X130	80MM NP16 FLANGE SET M16 X 130MM – NITRILE GASKET – GAS	ea
100 BSGASM16X75	100MM NP16 FLANGE SET M16 X 75MM – NITRILE GASKET – GAS	ea
100 BSGAS	100MM NP16 FLANGE SET M16 X 90MM – NITRILE GASKET – GAS	ea
150 BSGASM20X70	150MM NP16 FLANGE SET M20 X 70MM – NITRILE GASKET – GAS	ea
150 BSGAS	150MM NP16 FLANGE SET M20 X 110MM – NITRILE GASKET – GAS	ea
200 BSGASM20X110	200MM NP16 FLANGE SET M20 X 110MM – NITRILE GASKET – GAS	ea

300 BSGASM24X100	300MM NP16 FLANGE SET M24 X 100MM – NITRILE GASKET – GAS	ea
300 BSGASM24X130	300MM NP16 FLANGE SET M24 X 130MM – NITRILE GASKET – GAS	ea

CONCRETE SECTIONS & COVERS

Product Code	Description	UoM
CCS 150X150X100	150MM X 150MM X 100MM CONCRETE CHAMBER SECTION	ea
CCS 150X150X150	150MM X 150MM X 150MM CONCRETE CHAMBER SECTION	ea
SB 150X150X100G	SURFACE BOX 150MM X 150MM X 100MM MARKED GAS	ea
CCS 300X300X100	300MM X 300MM X 100MM CONCRETE CHAMBER SECTION	ea
SB 300X300X75G	SURFACE BOX 300MM X 300MM X 75MM MARKED GAS	ea
CCS 430X280X100	430MM X 280MM X 100MM CONCRETE CHAMBER SECTION	ea

PLASTIC SECTIONS & COVERS

Product Code	Description	UoM
ECO230X230X150	ECO CHAMBER SECTION 230X230X150MM	ea
ECO230X230X75	ECO CHAMBER SECTION 230X230X75MM	ea
ECO430X280X150	ECO CHAMBER SECTION 430 X 280 X 150MM	ea
ECO430X280X75	ECO CHAMBER SECTION 430 X 230 X 75MM	ea
ECOBASE2CEN	BASE UNIT CENTRAL HOLE FOR 430 X 280MM CHAMBER SECTION	ea
ECOBASE2OFF	BASE UNIT OFF SET HOLE FOR 430 X 280MM CHAMBER SECTION	ea
ECOTOPHAT	ECO CHAMBER SECTION TOP HAT 230 X 230MM	ea
SB150X150X100G	SURFACE BOX 150MM X 150MM X 100MM MARKED GAS	ea
SB300X300X75G	SURFACE BOX 300MM X 300MM X 75MM MARKED GAS	ea
SB225X225GAS	SURFACE BOX 225MM X 225MM X 100MM MARKED GAS	ea
SB 225X225GAS	SURFACE BOX 225MM X 225MM X 100MM MARKED GAS	ea



£1 MILLION STOCK



24 HOUR DELIVERY



TECHNICAL KNOWLEDGE



APPROVED PRODUCTS



NO MINIMUM
ORDER VALUE

UNDER PRESSURE TEES

PE Pipeline Specialists' product range covers several industries as we provide options for the transportation and distribution of gas, water and wastewater. Supplying products for gas applications, PE Pipeline Specialists can offer technical advice and products to fit your specifications. As well as meters, fittings, UPTs, tools and accessories, we are a leading supplier of pipes from Radius Systems.

UNDER PRESSURE TEES



SERIES 215 STAINLESS STEEL TEE

Product Code	Description	UoM
U/PTGAS 80X80	80MM FLANGE X 80MM PIPE	ea
U/PTGAS 100X80	80MM FLANGE X 100MM PIPE	ea
U/PTGAS 150X80	80MM FLANGE X 150MM PIPE	ea
U/PTGAS 200X80	80MM FLANGE X 200MM PIPE	ea
U/PTGAS 250X80	80MM FLANGE X 250MM PIPE	ea
U/PTGAS 300X80	80MM FLANGE X 300MM PIPE	ea
U/PTGAS 100X100	100MM FLANGE X 100MM PIPE	ea
U/PTGAS 150X100	100MM FLANGE X 150MM PIPE	ea
U/PTGAS 200X100	100MM FLANGE X 200MM PIPE	ea
U/PTGAS 250X100	100MM FLANGE X 250MM PIPE	ea
U/PTGAS 300X100	100MM FLANGE X 300MM PIPE	ea
U/PTGAS 150X150	150MM FLANGE X 150MM PIPE	ea
U/PTGAS 200X150	150MM FLANGE X 200MM PIPE	ea
U/PTGAS 250X150	150MM FLANGE X 250MM PIPE	ea
U/PTGAS 300X150	150MM FLANGE X 300MM PIPE	ea
U/PTGAS 200X200	200MM FLANGE X 200MM PIPE	ea
U/PTGAS 300X200	200MM FLANGE X 300MM PIPE	ea

Other sizes available – call 01942 727788 to discuss.



BOSS TYPE CONNECTION CLAMPS

Product Code	Description	UoM
UPBOSS 3X2IN	3" SPLIT COLLAR 6" LONG C/W 2" BOSS (345)	ea
UPBOSS 4X2INGAS	4"DIA X 12"LG +2" BOSS MULTI REPAIR CLAMP (111-131)	ea
UPBOSS 6X2INGAS	6" SPLIT COLLAR 6" LONG C/W 2" BOSS (645)	ea



END CAPS

Product Code	Description	UoM
24832003013	88-99MM FIG. 248 GAS END CAP – CAST PIPE ONLY NOT PE	ea
24832004013	113-124MM FIG. 248 GAS END CAP – CAST PIPE ONLY NOT PE	ea
24832006013	167-179MM FIG. 248 GAS END CAP – CAST PIPE ONLY NOT PE	ea
24832010013	270-288MM FIG. 248 GAS END CAP – CAST PIPE ONLY NOT PE	ea



SWIVEL TOP TEES (UNDERPRESSURE)

Product Code	Description	UoM
GF 775801131	UNDERPRESSURE SWIVEL TOP TEE 3/4" X 32MM	ea
GF 775801103	UNDERPRESSURE SWIVEL TOP TEE 1" X 32MM	ea
GF 775801240 / WASKAP 0012	UNDERPRESSURE SWIVEL TOP TEE (TWO PIECE) 1½" X 63MM	ea
GF 775801206 / WASKAP 0013	UNDERPRESSURE SWIVEL TOP TEE (TWO PIECE) 2" X 63MM	ea
WASKEA 0056	2" PLUG LIFTER – OPERATES INTERNAL PLUG ON 2" X 63MM TOP TEE SAFELY & WITHOUT GAS ESCAPING (WASKAP0013)	ea

UNDER PRESSURE TEES



FLEX CAP

Product Code	Description	UoM
GF 775452052 / WASKAN 0200	3/4" PRIMOFIT FLEX CAP - NBR	ea
GF 775452053 / WASKAN 0201	1" PRIMOFIT FLEX CAP - NBR	ea
GF 775452054 / WASKAN 0202	1 1/4" PRIMOFIT FLEX CAP - NBR	ea
GF 775452055 / WASKAN 0203	1 1/2" PRIMOFIT FLEX CAP - NBR	
GF 775452056 / WASKAN 0204	2" PRIMOFIT FLEX CAP - NBR	



EMID PLUGS

Product Code	Description	UoM
EMID 3/4	3/4" EMID PLUG	ea
EMID 1	1" EMID PLUG	ea
EMID 1 1/4	1 1/4" EMID PLUG	ea
EMID 1 1/2	1 1/2" EMID PLUG	ea
EMID 2	2" EMID PLUG	ea



COUPLING

Product Code	Description	UoM
GF 775102202	25MM PRIMOFIT COUPLING	ea
GF 775102203	32MM PRIMOFIT COUPLING	ea
GF 775102206	63MM PRIMOFIT COUPLING	ea

COUPLING ADAPTOR

Product Code	Description	UoM
GF 775102503	32MM PE X 1" STEEL COUPLER	ea
GF 775102506	63MM PE X 2" STEEL COUPLER	ea

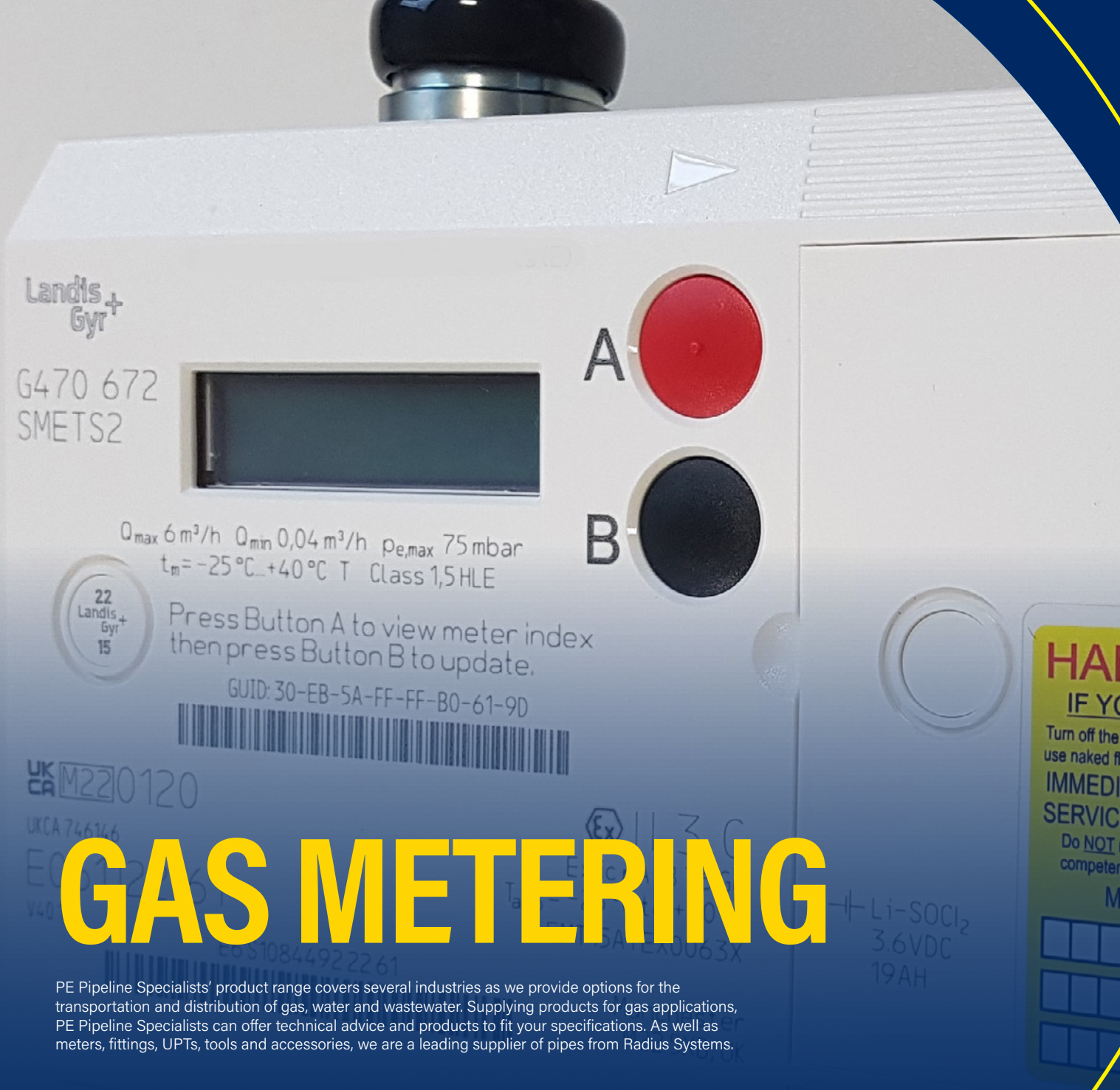


MALE ADAPTOR

Product Code	Description	UoM
GF 775202202	3/4" X 25MM PRIMOFIT MALE ADAPTOR	ea
GF 775202203	1" X 32MM PRIMOFIT MALE ADAPTOR	ea
GF 775202206	2" X 63MM PRIMOFIT MALE ADAPTOR	ea

FEMALE ADAPTOR

Product Code	Description	UoM
GF 775212202	3/4" X 25MM PRIMOFIT FEMALE ADAPTOR	ea
GF 775212203	1" X 32MM PRIMOFIT FEMALE ADAPTOR	ea
GF 775212206	2" X 63MM PRIMOFIT FEMALE ADAPTOR	ea



Landis+Gyr

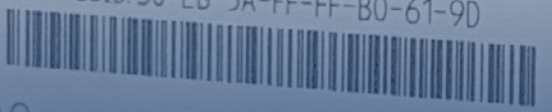
G470 672
SMETS2

Q_{max} 6 m³/h Q_{min} 0,04 m³/h $p_{e,max}$ 75 mbar
 t_m = -25°C...+40°C T Class 1,5HLE



Press Button A to view meter index
then press Button B to update.

GUID: 30-EB-5A-FF-FF-B0-61-9D



UK CA M220120

UKCA 746366

GAS METERING

PE Pipeline Specialists' product range covers several industries as we provide options for the transportation and distribution of gas, water and wastewater. Supplying products for gas applications, PE Pipeline Specialists can offer technical advice and products to fit your specifications. As well as meters, fittings, UPTs, tools and accessories, we are a leading supplier of pipes from Radius Systems.



£1 MILLION STOCK



24 HOUR DELIVERY



TECHNICAL KNOWLEDGE



APPROVED PRODUCTS



NO MINIMUM
ORDER VALUE

GAS METERING



1ST STAGE KIT

SURFACE & RECESSED

Product Code	Description	UoM
MK 1SM32	METER KIT 1ST STAGE SURFACE & RECESSED MOUNTED - 32MM	ea
44 BB	44MM BLACK BEND	ea
44 GRP1M	1MTR GRP SLEEVE	ea
44 GRP2M	2MTR GRP SLEEVE	ea
44 GRP3M	3MTR GRP SLEEVE	ea

SEMI CONCEALED

Product Code	Description	UoM
MK 1SC32	1ST STAGE METER KIT SEMI-CONCEALED X 32MM c/w BLACK BEND	ea
44 BB	44MM BLACK BEND	ea

MULTIBOX

Product Code	Description	UoM
MK 1MB32	1ST STAGE METER KIT 32MM MULTIBOX / UNIBOX	ea
44 BB	44MM BLACK BEND	ea



2ND STAGE KIT

SURFACE & RECESSED

Product Code	Description	UoM
MK 2REC	STAGE 2 METER KIT RECESSED / SURFACE & MULTIBOX U6	ea
MK 2RECESP	STAGE 2 METER KIT RECESSED / SURFACE & MULTIBOX U6 - ESP	ea

SEMI CONCEALED

Product Code	Description	UoM
MK 2SC	STAGE 2 METER KIT SEMI CONCEALED U6	ea

MULTIBOX

Product Code	Description	UoM
MK 2REC	STAGE 2 METER KIT RECESSED / SURFACE & MULTIBOX U6	ea
MK 2RECESP	STAGE 2 METER KIT RECESSED / SURFACE & MULTIBOX U6 - ESP	ea



SMART GAS METER

Product Code	Description	UoM
SMART MTR	SMART METER	ea



SURFACE MOUNTED GAS METER BOX

Product Code	Description	UoM
MBGASSM	SURFACE MOUNTED GAS METER BOX	ea

GAS METERING



BROWN RECESSED GAS METER BOX

Product Code	Description	UoM
G 01134	MITRAS BROWN RECESSED GAS METER BOX	ea



SEMI CONCEALED METER BOXES

Product Code	Description	UoM
G 60032	NATIONAL GRID SEMI-CONCEALED METER BOX WET BOX	ea



RECESSED MOUNTED GAS METER BOX

Product Code	Description	UoM
MBGASREC	WHITE RECESSED GAS METER BOX C/W SPIGOT & KEY	ea
MBGASDOOR	SPARE DOOR – RECESSED MOUNT	ea
METFEX 110	SPARE SPIGOT FOR GAS METER BOX	ea



MULTIBOX & UNIBOX

Product Code	Description	UoM
MULTIBOX	UNIVERSAL MULTIPURPOSE METER BOX BROWN	ea
UNIBOX	UNIVERSAL GAS METER BOX UNIBOX	ea

U25 GAS METER & KITS

Product Code	Description	UoM
U25 MTR	ELSTER BKG16/U25 2" DIAPHRAGM METER – 25m3/hr	ea
METSTDU 25KIT	ELSTER INSTALLATION KIT – INCLUDES FLEX, CAP/WASHER, ANGLED REGULATOR & METER UNION	ea
G16 PMTR	METRIX PULSED G16/U25 1 1/2" DIAPHRAGM METER – 25m3/hr	ea

Larger sizes available – call 01942 727788 to discuss.

U16 GAS METER & KITS

Product Code	Description	UoM
U16 MTR	ELSTER BKG10/U16 1 1/4" DIAPHRAGM METER – 16m3/hr	ea
U16 MTRKIT	ELSTER INSTALLATION KIT – INCLUDES FLEX, CAP/WASHER, ANGLED REGULATOR & METER UNION	ea
G10 PMTR	METRIX PULSED G10/U16 1 1/2" DIAPHRAGM METER – 16m3/hr	ea

Larger sizes available – call 01942 727788 to discuss.

GAS METERING

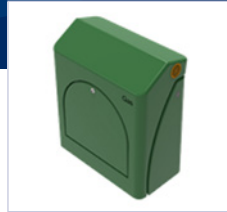


METER BOX ADAPTORS

Product Code	Description	UoM
METBC 222	1" BS746 X 22MM METER ADAPTOR - SOLDER	ea
METGA 232	3/4" - 32MM METER BOX ADAPTOR AJ0015 - CRIMP	ea
METGA 332	1" - 32MM METER BOX ADAPTOR AJ0017 - CRIMP	ea
METGA 226	3/4" X 25MM METER BOX ADAPTOR - SEMI CONCEALED AJ0013 - CRIMP	ea
METGA 233	3/4" X 32MM METER BOX ADAPTOR - SEMI CONCEALED AJ0009 - CRIMP	ea

BLACK BENDS, GRP SLEEVES & CLIPS

Product Code	Description	UoM
38 BB	38MM BLACK BEND GAS	ea
44 BB	44MM BLACK BEND GAS	ea
38 GRP1M	38MM GRP SLEEVE X 1 MTR	ea
38 GRP2M	38MM GRP SLEEVE X 2 MTR	ea
RC 38	38MM GRP RISER CLIP	ea
44 GRP1M	44MM GRP SLEEVE X 1 MTR	ea
44 GRP2M	44MM GRP SLEEVE X 2 MTR	ea
44 GRP3M	44MM GRP SLEEVE X 3 MTR	ea
RC 44	44MM GRP RISER CLIP	ea



GC2 - FLOOR STANDING

Product Code	Description	UoM
KIOSKGC 2	GC2 KIOSK FLOOR STANDING - SUITABLE FOR U16 GAS METER	ea



GC3 - WALL MOUNTING

Product Code	Description	UoM
KIOSKGC 3	GC3 WALL MOUNTED KIOSK - SUITABLE FOR U25 GAS METER LOW PRESSURE ONLY	ea



GC4 PLUS (+) - FLOOR STANDING

Product Code	Description	UoM
KIOSKGC 4PLUS	GC4+ FLOOR MOUNTED KIOSK SUITABLE FOR U40 GAS METER - MEDIUM PRESSURE	ea



GC2 - WALL MOUNTING

Product Code	Description	UoM
KIOSKGC 2WM	GC2 WALL MOUNTED KIOSK - SUITABLE FOR U16 GAS METER	ea

GAS METERING



GC4 - FLOOR STANDING

Product Code	Description	UoM
KIOSKGC 4	GC4 FLOOR STANDING KIOSK SUITABLE FOR: U16 or U25 GAS METERS – LOW & MEDIUM PRESSURE / U40 GAS METERS – LOW PRESSURE ONLY	ea



GC5 - FLOOR STANDING

Product Code	Description	UoM
KIOSKGC 5	G5 FLOOR MOUNTED KIOSK SUITABLE FOR U65 GAS METERS – LOW & MEDIUM PRESSURE	ea



GC6 LOW PRESSURE - FLOOR STANDING

Product Code	Description	UoM
KIOSKGC 6LP	GC6LP SUITABLE FOR U65 OR U100 GAS METERS – LOW PRESSURE ONLY	ea



GC6 EXPLOSION PROOF LOW PRESSURE - FLOOR STANDING

Product Code	Description	UoM
	GC6EXLP EXPLOSION PROOF FLOOR MOUNTED KIOSK SUITABLE FOR U65 OR U100 GAS METERS – LOW PRESSURE ONLY	ea



GC6 MEDIUM PRESSURE - FLOOR STANDING

Product Code	Description	UoM
KIOSKGC 6MP	GC6MP FLOOR MOUNTED KIOSK SUITABLE FOR U65 OR U100 GAS METERS – MEDIUM PRESSURE	ea



GC7 LOW PRESSURE - FLOOR STANDING

Product Code	Description	UoM
KIOSKGC 7LP	GC7LP SUITABLE FOR U65 OR U100 GAS METERS – LOW PRESSURE ONLY	ea

GAS METERING



GC7 EXPLOSION PROOF LOW PRESSURE - FLOOR STANDING

Product Code	Description	UoM
KIOSKGC 7	GC7EXLP EXPLOSION PROOF FLOOR MOUNTED KIOSK SUITABLE FOR U65 OR U100 GAS METERS - LOW PRESSURE ONLY	ea



GC7 PLUS (+) LOW PRESSURE - FLOOR STANDING

Product Code	Description	UoM
KIOSKGC 7PLUSLP	GC7LP+ FLOOR MOUNTED KIOSK SUITABLE FOR U65 OR U100 GAS METERS - LOW PRESSURE ONLY	ea



GC7 PLUS (+) EXPLOSION PROOF LOW PRESSURE - FLOOR STANDING

Product Code	Description	UoM
KIOSKGC 7PLUS	GC7EXLP+ EXPLOSION PROOF FLOOR MOUNTED KIOSK SUITABLE FOR U65 OR U100 GAS METERS - LOW PRESSURE ONLY	ea



GC7 MEDIUM PRESSURE - FLOOR STANDING

Product Code	Description	UoM
	GC7MP FLOOR MOUNTED KIOSK SUITABLE FOR U65 OR U100 GAS METERS - MEDIUM PRESSURE	ea

GC7 PLUS (+) MEDIUM PRESSURE - FLOOR STANDING

Product Code	Description	UoM
	GC7MP+ FLOOR MOUNTED KIOSK SUITABLE FOR U65 OR U100 GAS METERS - MEDIUM PRESSURE	ea



GC8 MEDIUM PRESSURE - FLOOR STANDING

Product Code	Description	UoM
KIOSKGC 8	GC8MP FLOOR MOUNTED KIOSK SUITABLE FOR U165 GAS METERS	ea

PLINTHS

Product Code	Description	UoM
	150MM PLINTH - CONVERTS GC6 KIOSK TO GC7 HEIGHT	ea
	300MM PLINTH - CONVERTS GC6 TO GC7 PLUS (+) HEIGHT	



GAS TOOLS & ACCESSORIES

PE Pipeline Specialists' product range covers several industries as we provide options for the transportation and distribution of gas, water and wastewater. Supplying products for gas applications, PE Pipeline Specialists can offer technical advice and products to fit your specifications. As well as meters, fittings, UPTs, tools and accessories, we are a leading supplier of pipes from Radius Systems.



£1 MILLION STOCK



24 HOUR DELIVERY



TECHNICAL KNOWLEDGE



APPROVED PRODUCTS



NO MINIMUM
ORDER VALUE

GAS TOOLS & ACCESSORIES



MARKER TAPE - DETECTABLE

Product Code	Description	UoM
TAPEDETGAS	DETECTABLE MESH MARKED GAS X 100 MTRS	roll



LABELS

Product Code	Description	UoM
METUNILABPACK1	UNIVERSAL KIT LABEL PACK - SSE	ea
METUNILABPACK2	UNIVERSAL KIT LABEL PACK - GTC	ea
METUNILABPACK3	UNIVERSAL KIT LABEL PACK - ESP	ea
METFULLABPACK	FULCRUM LABEL PACK - MANIFOLD LABELS	ea
METLABESP3	INSTALLED BY LABEL	ea



TAPE

Product Code	Description	UoM
PTFEGAS	PTFE GAS TAPE	ea
TAPEON/OFF	ON / OFF TAPE ROLLS FOR GAS METER VALVES	ea
METLABSQUEEZE	SQUEEZE OFF APPLIED TAPE	ea
TAPEPOLYEL	YELLOW POLYETHYLENE TAPE 50MM X 33 MTR	ea



MARKER TAPE - STANDARD

Product Code	Description	UoM
TAPENONGAS	NON-DETECTABLE TAPE MARKED GAS X 365 MTRS	roll

GAS ACCESSORIES

Product Code	Description	UoM
LEAKFLD	LEAK DETECTION - 1LTR	ea
METLABSQUEEZE	SQUEEZE OFF APPLIED TAPE	ea
WELDWIPE90	WELDWIPE 90% (TUB OF 100)	ea
EXFOAM	EXPANDING FOAM	ea

GAS TOOLS

Product Code	Description	UoM
JOINTPASTE	JOINTING PASTE	ea
PCS2063	20MM - 63MM PE PIPE CUTTERS	ea
SQT32MINI	16MM - 32MM MINI SQUEEZE TOOL	ea
SQT63	32MM - 63MM SQUEEZE TOOL	ea
HARRISSML	1 1/2" HARRIS SCRAPER - PULL VERSION	ea
HARRISBLADESML	1 1/2" HARRIS SCRAPER BLADE (PK 2)	ea
HARRISLGE	2 1/2" HARRIS SCRAPER - PULL VERSION	ea
HARRISBLADE	2 1/2" HARRIS SCRAPER BLADE (PK 2)	ea
80SPADE	80MM SPADE	ea
100SPADE	100MM SPADE	ea
150SPADE	150MM SPADE	ea



01942 727788

Unit 3, Link 25 Business Park,
Wigan Road, Ashton-in-Markerfield,
Wigan, WN4 0DA.

enquiries@pepipelinespecialists.co.uk
www.pepipelinespecialists.co.uk

