



SERIES 455 AVR DUCTILE IRON BALL VALVE



The Series 455 Ball Valves have been designed for use on Medium Pressure PE Gas Mains as a simple and cost effective method of installing Purge Point and Pressure Point Valves directly from the PE Mains to the surface. Using electrofusion technology it removes the need for a screwed connection underground.

PRODUCT DESCRIPTION

These clear bore ball valves are Kitemark Approved to Gas Industry Standards and are a proven design that has been used by the UK Gas industry for over 20 years. The valves come with an anti rotation device (fitted before backfilling) to ensure that the valves cannot transfer any rotational forces to the pipeline when operated after installation.

DESIGN STANDARDS

GIS/PL3, BS ISO 7121, EN12266

SERVICE CONDITIONS

Maximum working pressure: PE80 4 bar (58psig),
PE100 7 bar (100sig)

Temperature range: -20°C to +50°C

OPTIONS

Separate Anti Rotation Device (Helicopter) can be fitted just before backfilling making valve installation easier.

PE 100 option available.

FEATURES

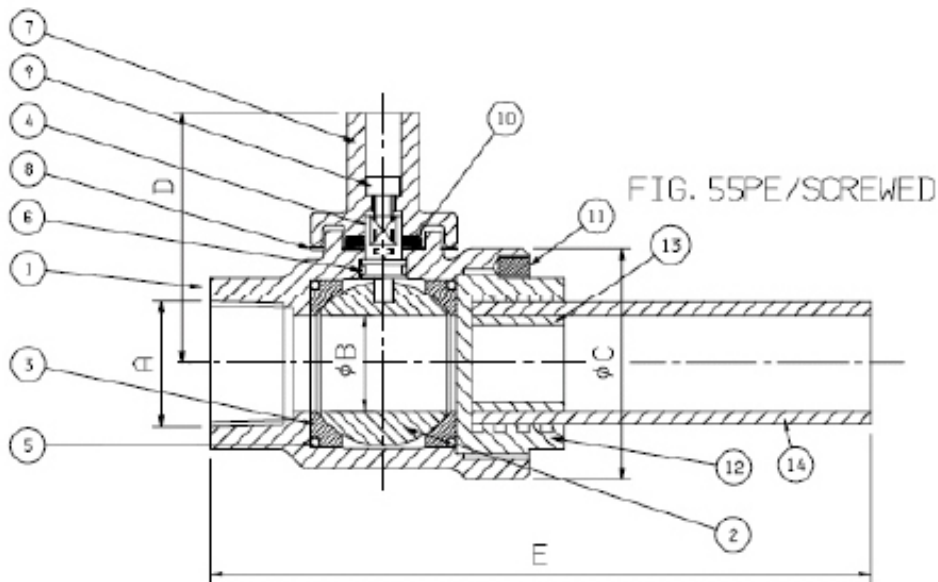
- Robust construction: Made from high-quality ductile iron, this valve is designed to withstand high pressures and harsh environments.
- Full bore design: Ensures minimal flow resistance and efficient fluid control.
- Corrosion resistant: The valve features an epoxy coating that protects against corrosion, enhancing its lifespan.
- Easy operation: With a quarter-turn mechanism, it allows for quick and easy operation.
- Reliable sealing: Equipped with durable seals, the valve ensures leak-proof performance.
- Maintenance free.
- Pre-loaded PTFE seats.
- Clear Bore ensures minimum pressure drop.
- Factory fitted PE Tails.
- Parallel false cap. Spanner operated.
- Totally enclosed design for buried service.
- Kitemark approved to GIS/PL3.
- Supplied in sealed bag for protection.



COMPONENT LIST

1. Body	Ductile Iron	8. Dust Shield	Stainless Steel
2. Ball	Stainless Steel	9. Cap Screw	High Tensile Steel
3. Seats	PTFE	10. Disc Spring	Steel
4. Stem	Stainless Steel	11. Grub Screw	High Tensile Steel
5. Seal o-rings	Nitrile	12. Body End 63mm Cast Iron	Mild Steel/Zinc Plated
6. Stem O-ring	Nitrile	13. Insert	Mild Steel/Zinc Plated
7. Falsecap	Ductile Iron	14. PE Pipe	PE 80 SDR11

Components may be substituted with equivalent or higher class materials without prior notification.



DIMENSIONS AND PART NUMBERS

VALVE SIZE A	1" X 32mm	2" X 63mm
BORE B	25mm	50mm
DIAMETER C	70mm	108mm
HEIGHT D	66mm	85mm
LENGTH E	720mm	760mm
WEIGHT	1.8kg	4.2kg
VALVE PART NUMBER	455323207413	455636207413
HELICOPTER PART NUMBER	501/VP-701	502/VP-701

