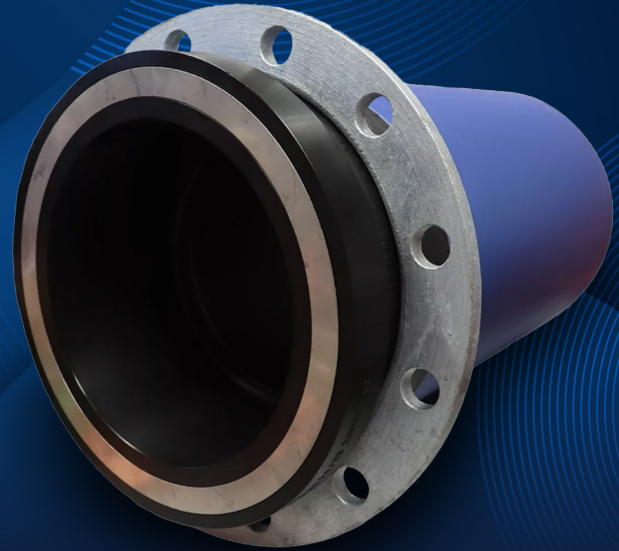




EASISLIM

HIGH PERFORMANCE SIZE-FOR-SIZE
PE FLANGE ADAPTOR

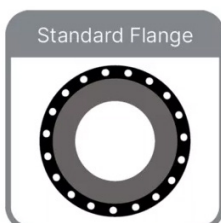


The EasiSlim Flange for potable and non-potable pipelines from Radius Systems is a steel reinforced PE flange adaptor, which allows for size-for-size jointing of PE pipe to other flanged components.

DESIGNED FOR OPTIMISED CONNECTIONS

The EasiSlim flange has been designed not only for improving the ease of connections, but also with maximising flow capability in mind. PE flange adapters with the slim design, feature a steel reinforced ring buried within the flange face, which means a significantly smaller backing ring than a traditional flange. This eliminates the need to upsize other valves or components and is easy to install due to the rotatable functionality of the backing ring.

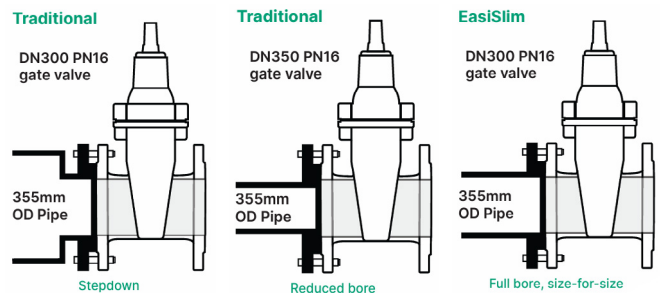
EasiSlim has a smaller backing ring configuration but retains a full size-for-size bore...



Larger diameter backing ring



Slimmer profile backing ring



355mm EasiSlim Flange connects 355mm OD (outside diameter) PE pipe directly to a DN300 PN16 valve. A traditional 355mm PE Flange requires a DN350 PN16 valve for bolting to match.

Most size-for-size Flanges, temporarily reduce the bore size which can reduce joint strength and cause blockages - EasiSlim avoids all these problems by maintaining full flow.

THE ADVANCED FLANGE INTERFACE

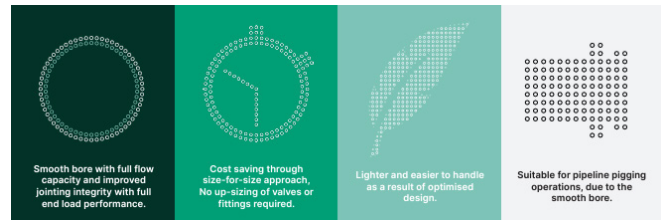
The Advanced Flange Interface features a superior design, where by the steel backing ring and the steel reinforcement ring work together to provide maximum support to the flange face, for a secure connection. The EasiSlim flange provides a high quality secure connection between the PE pipeline and metallic component, which delivers long term joint integrity, critical to the longevity of the pipeline.



TECHNICALLY TESTED TO THE HIGHEST OF STANDARDS

Extensive performance tests in a dedicated high specification engineering facility were carried out to meet the stringent quality standards that Radius upholds. Uniquely, Radius can prove the performance of EasiSlim to the most exacting standards.

In addition to industry standard hydrostatic testing and butt fusion quality tests, the EasiSlim underwent the most extreme of tensile testing. Loads of over 100 tonnes were applied, demonstrating its suitability in challenging installations. Even under this huge load, the EasiSlim holds strong... stronger than the pipe itself.



PRODUCT CODE

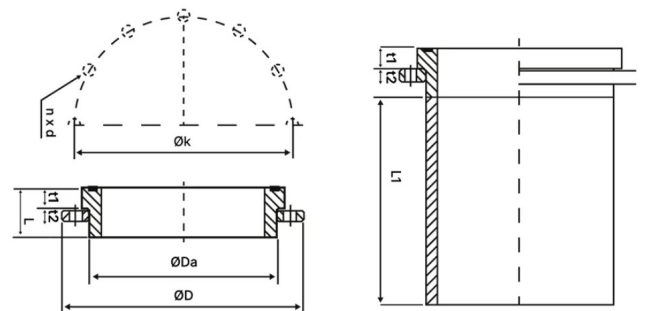
Range	SDR 11		SDR 17		SDR 21		
	Dimensions	Blue	Black	Blue	Black	Blue	Black
	250 × 200	WR9973	WS9973	WR9974	WS9974	WR9975	WS9975
	315 × 250	WR9976	WS9976	WR9977	WS9977	WR9978	WS9978
	355 × 300	WR9979	WS9979	WR9980	WS9980	WR9981	WS9981
	400 × 350	WR9982	WS9982	WR9983	WS9983	WR9984	WS9984
	450 × 400	WR9985	WS9985	WR9986	WS9986	WR9987	WS9987
	500 × 450	WR9988	WS9988	WR9989	WS9989	WR9990	WS9990
	560 × 500	WR9991	WS9991	WR9992	WS9992	WR9993	WS9993

Blue is for potable water use only

SIZE RANGE

Dimensions SDR 11 & 17	L (mm)	L1 (mm)	ØD (mm)	t1 (mm)	t2 (mm)	Øk (mm)	n x d (mm)	Metric Bolt Size
250 × 200	130	500	340	31	12	295	12 × 22	M20
315 × 250	130	500	405	36	18	359	12 × 24	M22
355 × 300	130	500	460	39	20	410	12 × 26	M24
400 × 350	160	500	520	42	25	470	16 × 26	M24
450 × 400	160	1000	580	46	25	525	16 × 30	M27
500 × 450	160	1000	640	50	26	585	20 × 30	M27
560 × 500	160	1000	715	55	26	650	20 × 33	M30

- BS 8561:2021 EN 12201-3: 2011+A1:2012
- Backing drilled to BS EN 1092-1:2007 table 13 except for 315x250
- SDR17 and SDR21 are type 1, SDR11 is type 2
- Maximum Operating Pressure:
SDR11 - 16bar
SDR17 - 10bar
SDR21 - 8bar
- The specifications of this technical data are non-binding



1. KM 797968
2. BS 8561:2021

